

Enquiry Questions

KQ1: Was Stone Age man simply a hunter and gatherer, concerned only with survival?



Settlements



Change and Continuity

KQ6: Can you solve the mystery of the 52 skeletons of Maiden Castle?



Artefacts

Assessment opportunity



Enquiry using evidence

KQ2: How different was life in the Stone Age when man started to farm?



Food and farming



Similarity and Difference



KQ5: How much did life really change during the Iron Age and how can we possibly know?



Main events

Assessment opportunity



Interpretation

KQ3: What can we learn about life in the Stone Age from a study of Skara Brae?



Settlements

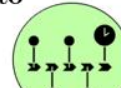


Enquiry using evidence

KQ4: Why is it so difficult to work out why Stonehenge was built?



Artefacts



Chronology

Date: Tuesday 4th October 2022

KQ2: How different was life in the Stone Age, when man started to farm?

Key themes (substantive)

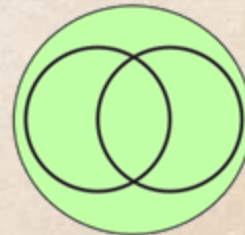


Food and
farming



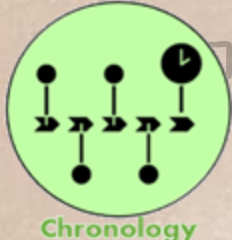
Settlements

How to be a historian (disciplinary))

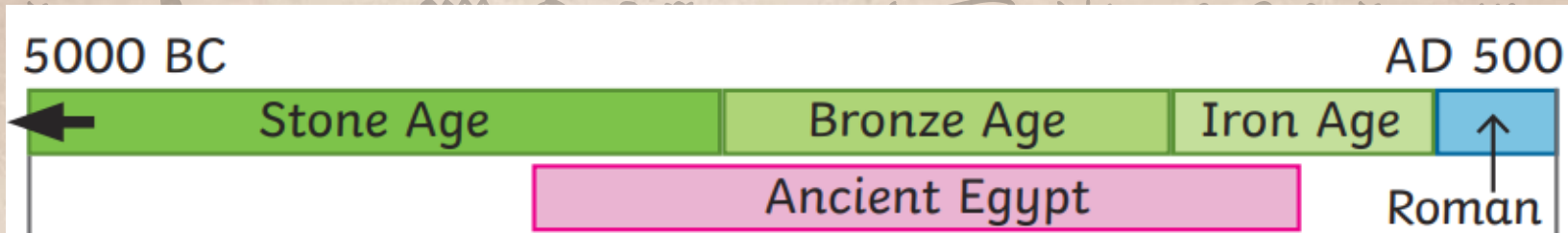


Similarity and
Difference

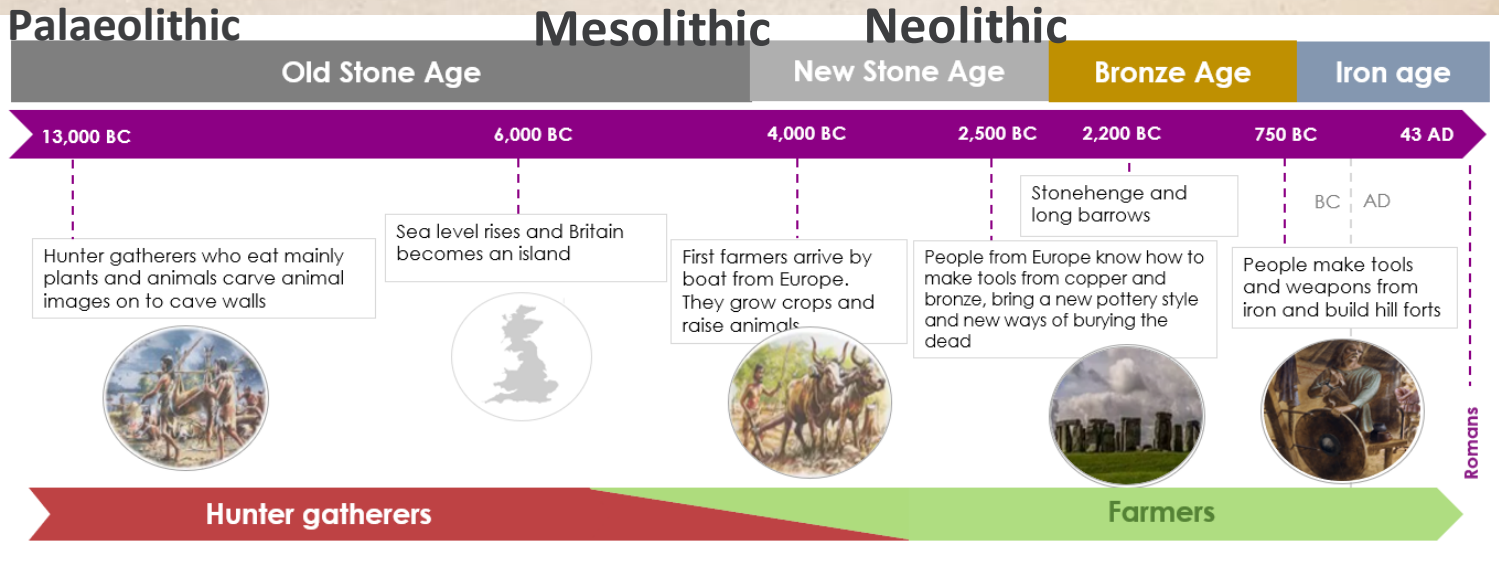




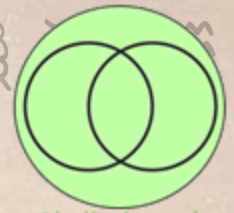
Chronology



TYP- Why can't historians know for sure how long ago the Stone Age was?



Disciplinary Skill Practise



Similarity and
Difference

What is
the same
as a farm
in 2022?

What is
different
to a farm
in 2022?



Artists interpretation of a Neolithic farm.

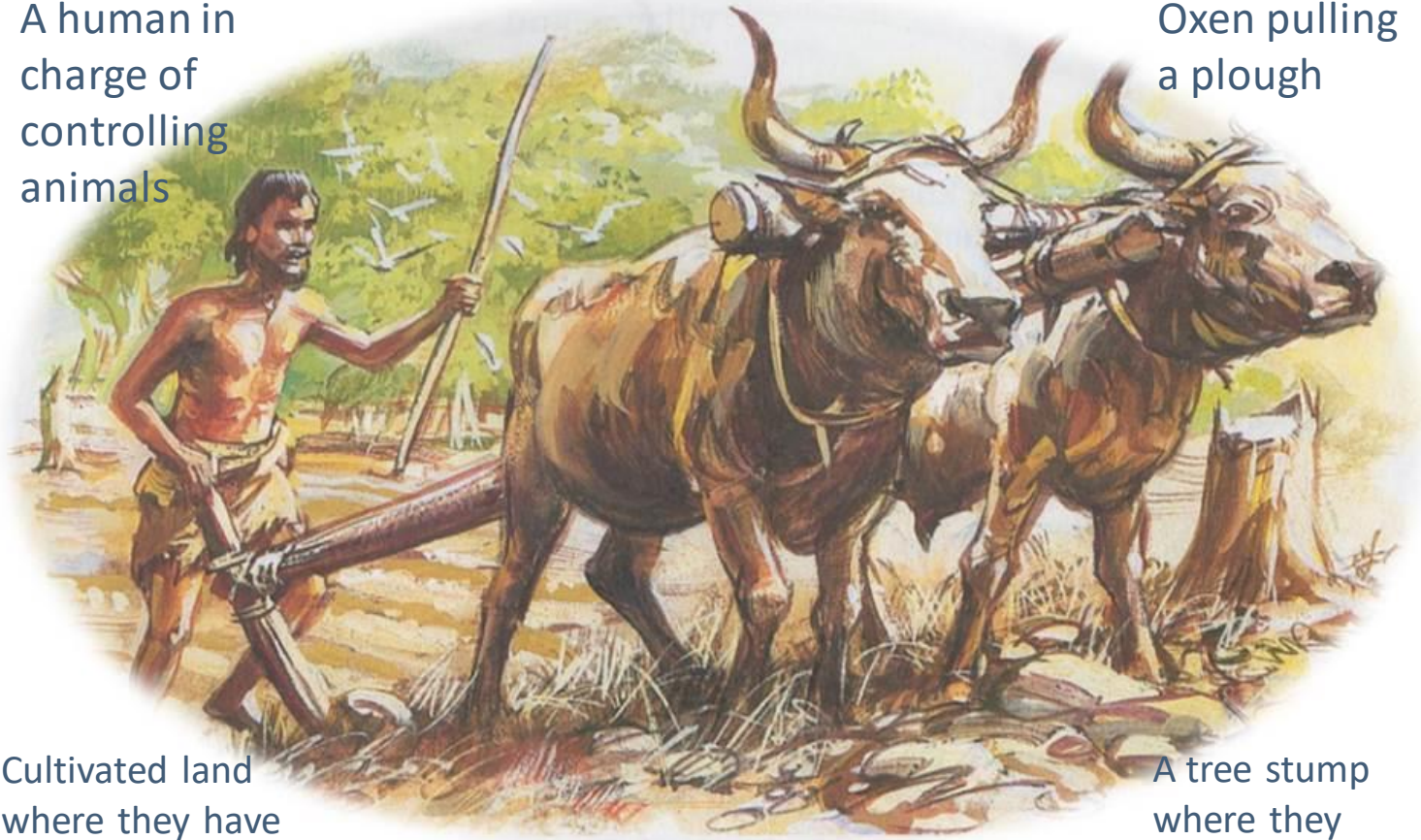


When Stone Age man began to learn how to farm, their lives changed greatly.

Look at the picture, what can you see?

A human in charge of controlling animals

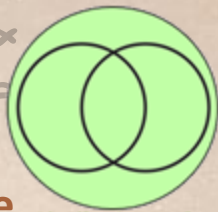
Oxen pulling a plough



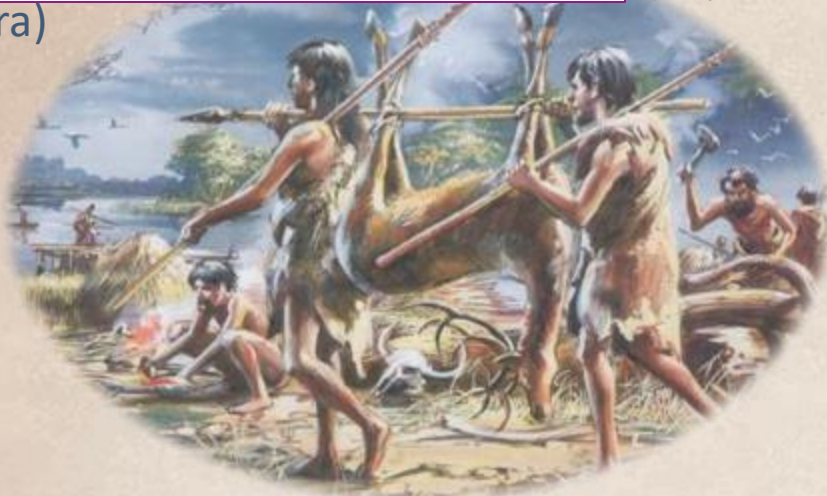
Cultivated land where they have planted seeds

A tree stump where they chopped down trees to make room

9,000 years ago (Palaeolithic era)



Similarity and Difference



Both of these artists interpretations are from the Stone Age. The first, which we explored last week is a historians estimation at what life was like 9,000 years ago.

The second picture is of what historians believe life was like in the Stone Age 5,000 years ago, therefore they are 4,000 years apart.

Table Talk- What similarities can you see? What differences can you see?



5,000 years ago (Neolithic era)

How much did life change for Stone Age man when he started to farm?

Task: In your table groups, you are going to receive 10 cards with different reasons why life changed for Stone Age man, when they began to farm. In your groups you will need to decide if this was a **BIG** change to their lives, a small change or if life just carried on as before.

Carried on as
before

Small
CHANGE

BIG
CHANGE

How much did life change for Stone Age man when he started to farm?

Let's discuss...

Some still hunted

Continued to use stone tools

Kept pigs and cattle

People started to make pots

People started to have complicated burial ceremonies

People cleared woodland (i.e. this had already started)

Training oxen to pull the ploughs

Growing crops such as wheat and barley

Has small farms

Started to live on small settlements

Carried on as
before

Small
CHANGE

BIG
CHANGE

How much did life change for Stone Age man when he started to farm?

Teacher model double page spread

Some still hunted

Continued to use stone tools

Kept pigs and cattle

People started to make pots

People started to have complicated burial ceremonies

People cleared woodland (i.e. this had already started)

Training oxen to pull the ploughs

Growing crops such as wheat and barley

Has small farms

Started to live on small settlements

Carried on as
before

Small
CHANGE

BIG
CHANGE